

HON

A row of modern, light gray, adjustable height tables with green upholstered chairs in a bright office setting with large windows overlooking a city skyline. The tables are on casters and have a clean, minimalist design. The chairs are a vibrant green color. The background shows a city skyline through large windows, with greenery in the foreground.

HUDDLE™
Multi-purpose Tables

TABLES THAT
WELCOME CHANGE



Huddle Up

In today's office, work happens everywhere: in project rooms, in meeting and learning spaces, in impromptu collaborations where two or three people put their heads together to solve a problem or share information.

Huddle multi-purpose tables let you use the same space for a variety of purposes and make change happen fast. Set up several in a conference room for new employee training at 10:00; reconfigure them for a presentation at noon. Pull one up to a desk for a quick work session with a colleague. Push two against the wall to stage a paper-intensive project.

A wide selection of over 20 laminate finishes, 10 base colors, and 3 edge detail options makes Huddle perfectly compatible with any work environment.

UP FOR CHANGE

Time is money, and space is serious overhead. Huddle multi-purpose tables work with you to make the most of both. Tables are available with a choice of top shapes (rectangular or half-round) and legs (post legs, T-legs, or nesting bases). With a variety of options to choose from, you can specify Huddle tables that are easy to set up and easy to rearrange.



POST LEG
Sturdy and affordable
(glides or casters)



T-LEG
Unobstructed leg room
(glides or casters)



NESTING BASE
Space-efficient storage
(casters only)

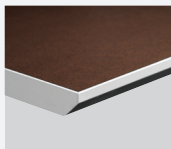




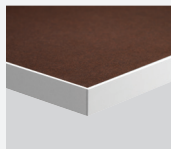
UP FOR ANYTHING

With accessories available to customize tables for specific uses, Huddle supports whatever work you need to do—wherever you need to do it.

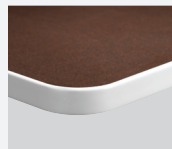
EDGES



KNIFE



EDGEBAND



T-MOLD

MODESTY PANEL



FEET



T-LEG GLIDE



NESTING BASE/
T-LEG CASTER



POST LEG GLIDE



POST LEG CASTER
Available on 24" and
30" D tables only.

GANGING HARDWARE



GROMMETS



OPTIONAL



POWER HUB



DATA HUB

ELECTRICAL



POWER ENTRY
PLATE



POWER ENTRY
CABLE



POWER KIT

WIRE MANAGEMENT



WIRE TROUGH



WIRE MANAGEMENT
STRIPS

The nesting base allows for space-efficient table storage. The dampened articulation of the hinge mechanism lets the tabletop fold down safely and softly. Modesty panels drop down and out of the way when tables are nested.



PRODUCTS, MATERIALS, AND FINISHES SHOWN:

Front: Huddle multi-purpose tabletops in Morro Zephyr with edgeband in Platinum, nesting bases and modesty panels in Platinum Metallic. Perpetual® Nesting chairs in Attire Ivy with Titanium frames.

Inside Spread A: Huddle multi-purpose tabletops in Silver Mesh with knife edge in Charcoal, T-leg and post leg bases in Charcoal. Ignition™ chairs in Attire Turquoise.

Inside Spread B: Huddle multi-purpose tabletops in Silver Mesh with edgeband in Charcoal and nesting bases in Charcoal. Ignition chairs in Attire Turquoise.

Inside Spread C, E: Huddle multi-purpose tabletops in Morro Zephyr with edgeband in Platinum, nesting bases and modesty panels in Platinum Metallic. Perpetual Nesting chairs in Attire Ivy with Titanium frames.

Inside Spread D: Huddle multi-purpose tabletops in Silver Mesh with knife edge in Charcoal, T-leg bases in Charcoal. Ignition chairs in Attire Turquoise.

Back F: Huddle multi-purpose tabletops in Steel Mesh with edgeband in Platinum, nesting bases and modesty panels in Platinum Metallic. SmartLink® wall rail system with Platinum Metallic trim and tackboard in Element Veil. Flagship® storage in Platinum Metallic and Brilliant White. Perpetual Nesting chairs in Boom Poppy with Titanium frames.



SCIENTIFIC CERTIFICATION SYSTEMS

For all Huddle multi-purpose table components except knife edge tabletops.

HON.

The HON Company
200 Oak Street
Muscatine, IA 52761
800.833.3964
hon.com

© 2011 The HON Company. Form No. H4040 (04/11)
HON, Flagship, SmartLink and Perpetual are registered trademarks of HNI Technologies, under license to The HON Company. Huddle and Ignition are trademarks of The HON Company. Indoor Advantage is a trademark of Scientific Certification Systems. Models, upholstery and finishes are subject to change without notice.